



American Heart Association®

Teaching Gardens®

Grade Band

1-3

Time

20 minutes

Season

Any

Location

Indoors or Outdoors

Create a Plant

Description:

In this activity, students work in teams of six to draw creative plants, including six plant structures: Roots, stems, leaves, flowers, fruits and seeds.

Materials:

- 1 blank piece of paper for each student
- A variety of colored pencils or pens for each group of six students

Preparation:

- None



Activity:

1. Discuss Structure and Function: Explore structures with students:

Everyone, touch your nose! This is a "structure" on your face. Now turn to someone next to you and tell them the function, or job, of your nose. Ask a few volunteers to share out different functions, such as to smell and to breathe. Explain: Every structure on our bodies has one or more functions or jobs. Plants also have structures, and each structure on a plant also has a function. Today, you're going to work in teams to illustrate creative plants that have all of the key plant structures! Set the tone for being supportive of other artists in their group, perhaps by saying: We're all going to draw in our own way, and that is what will make our illustrations interesting.

2. Explain the Art Activity: Put students into teams of six and have each team of six sit in a small circle. If you have a few teams with seven, pair up two students from each of those teams.

Distribute paper to each student. Explain: *Everyone, the first thing I want you to draw on your paper are some roots, near the bottom edge of the paper. You can draw your roots in any color.*

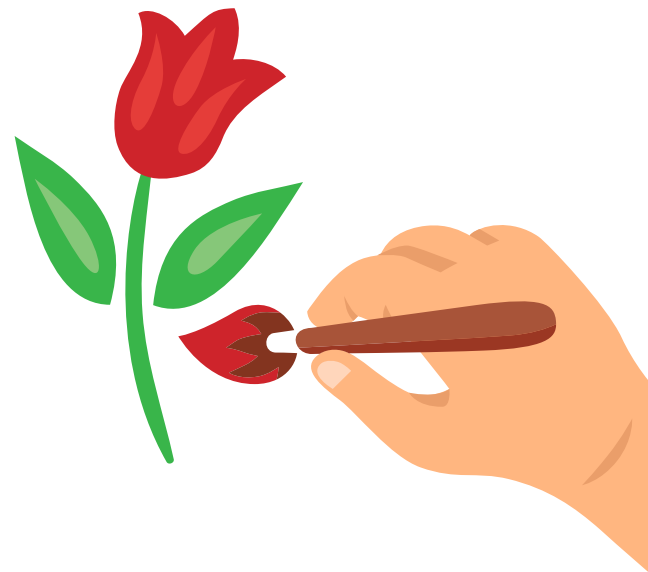
Connections to Content Standards:

Next Generation Science Standards (NGSS):

NGSS Disciplinary Core Idea: LS1-A

All organisms have external parts. Different animals use their body parts in different ways to see, hear, grasp objects, protect themselves, move from place to place, and seek, find, and take in food, water, and air. Plants also have different parts (roots, stems, leaves, flowers, fruits) that help them survive and grow.

NGSS Crosscutting Concept: Structure and Function



Create a Plant, *continued*

Just make sure to give them a good shape to soak up water and nutrients from the soil. Once everyone has drawn some roots, explain: Now, everyone, you will pass your paper to the left. On your new plant, I want you to add a stem. Your stem should have a good structure to hold the plant up, and carry the water from the roots up to the other structures on the plant. Repeat, passing after each plant structure is illustrated, and inviting students to add on leaves, flowers, fruits, and seeds.

- 3. Wrap Up:** After the papers have gone through all six artists and all six plant structures are on each plant, invite students to label the plant structures on the illustration that ended up with them, and to name their very creative plant. Then have students share out their plants.

